

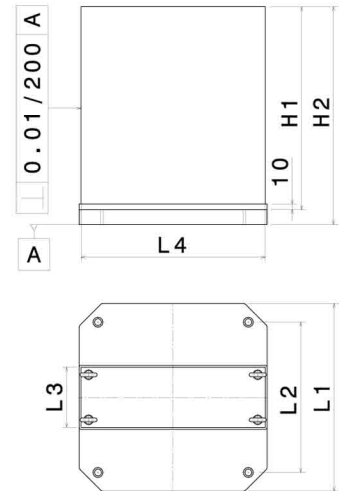


STATIONS DE BRIDAGE : Colonnes SB

Colonnes SB 2 faces



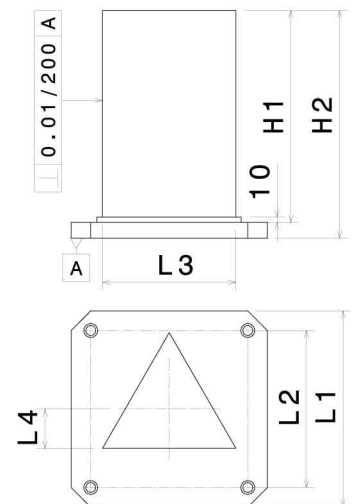
Matière	Alu AS7		Fonte FGL 250	
	L1 (mm)	400	500	400
L2 (mm)	300	400	300	400
L3 (mm)	120	160	120	160
L4 (mm)	400	500	400	500
H1 (mm)	480	540	480	540
H2 (mm)	515	580	515	580
Poids (Kg)	70	95	200	271
Référence	SB.2.A.480.400	SB.2.A.545.500	SB.2.F.480.400	SB.2.F.545.500



Colonnes SB 3 faces



Matière	Alu AS7		Fonte FGL 250	
	L1 (mm)	400	500	400
L2 (mm)	300	400	300	400
L3 (mm)	240	320	240	320
L4 (mm)	87	98	87	98
H1 (mm)	480	540	480	540
H2 (mm)	515	580	515	580
Poids (Kg)	45	75	145	230
Référence	SB.3.A.480.400	SB.3.A.545.500	SB.3.F.480.400	SB.3.F.545.500



Colonnes SB 4 faces



Matière	Alu AS7		Fonte FGL 250	
	L1 (mm)	400	500	400
L2 (mm)	300	400	300	400
L3 (mm)	240	290	240	290
H1 (mm)	480	540	480	540
H2 (mm)	515	580	515	580
Poids (Kg)	55	85	160	245
Référence	SB.4.A.480.400	SB.4.A.545.500	SB.4.F.480.400	SB.4.F.545.500

