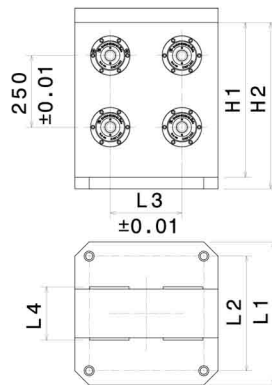




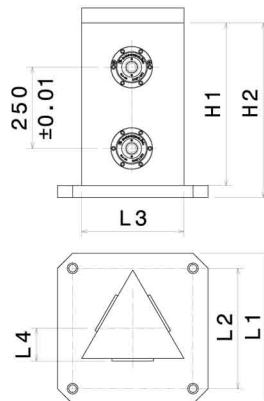
STATIONS DE BRIDAGE : Colonnes SBM avec EASYLOCK

Colonnes SBM 2 faces



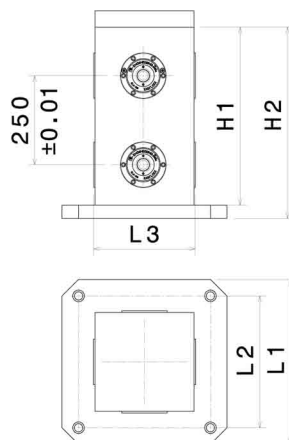
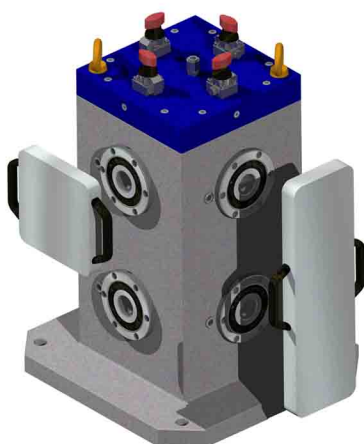
Matériau	Alu AS7		Fonte FGL 250	
	L1 (mm)	L2 (mm)	L3 (mm)	L4 (mm)
L1 (mm)	400	500	400	500
L2 (mm)	300	400	300	400
L3 (mm)	200	250	200	250
L4 (mm)	146	186	146	186
H1 (mm)	480	540	480	540
H2 (mm)	515	580	515	580
Poids (Kg)	90	125	232	300
Référence	SBM.2.A.480.400	SBM.2.A.545.500	SBM.2.F.480.400	SBM.2.F.545.500

Colonnes SBM 3 faces



Matériau	Alu AS7		Fonte FGL 250	
	L1 (mm)	L2 (mm)	L3 (mm)	L4 (mm)
L1 (mm)	400	500	400	500
L2 (mm)	300	400	300	400
L3 (mm)	240	320	240	320
L4 (mm)	97	108	97	108
H1 (mm)	480	540	480	540
H2 (mm)	515	580	515	580
Poids (Kg)	65	100	165	255
Référence	SBM.3.A.480.400	SBM.3.A.545.500	SBM.3.F.480.400	SBM.3.F.545.500

Colonnes SBM 4 faces



Matériau	Alu AS7		Fonte FGL 250	
	L1 (mm)	L2 (mm)	L3 (mm)	L4 (mm)
L1 (mm)	400	500	400	500
L2 (mm)	300	400	300	400
L3 (mm)	264	316	264	316
H1 (mm)	480	540	480	540
H2 (mm)	515	580	515	580
Poids (Kg)	75	110	185	280
Référence	SBM.4.A.480.400	SBM.4.A.545.500	SBM.4.F.480.400	SBM.4.F.545.500